

golfside

APARTMENTS



Welcome to Golfside Apartments, where charm combines with convenience to create a unique lifestyle. Discover stately buildings offering roomy floor plans filled with features that make each day a pleasure. Your community provides tranquil seclusion designed to relax, yet is conveniently located halfway between Ann Arbor and Ypsilanti. You are a short distance to four major educational centers, and less than one block to the bus line. Accept an invitation to the Golfside lifestyle, and enjoy the results!

Charming Amenities

- Spacious studio, one and two bedroom apartment homes
- **Free heat, water and gas**
- Large patio or balcony
- Sound entry system
- Upgraded kitchen cabinets and appliances
- Plush neutral carpeting throughout
- Ceiling fan
- Select homes include walk-in closets
- Cable television ready
- Air conditioning
- Smoke detectors
- Additional storage available
- On-site laundry facilities

Efficiency 400 Square feet

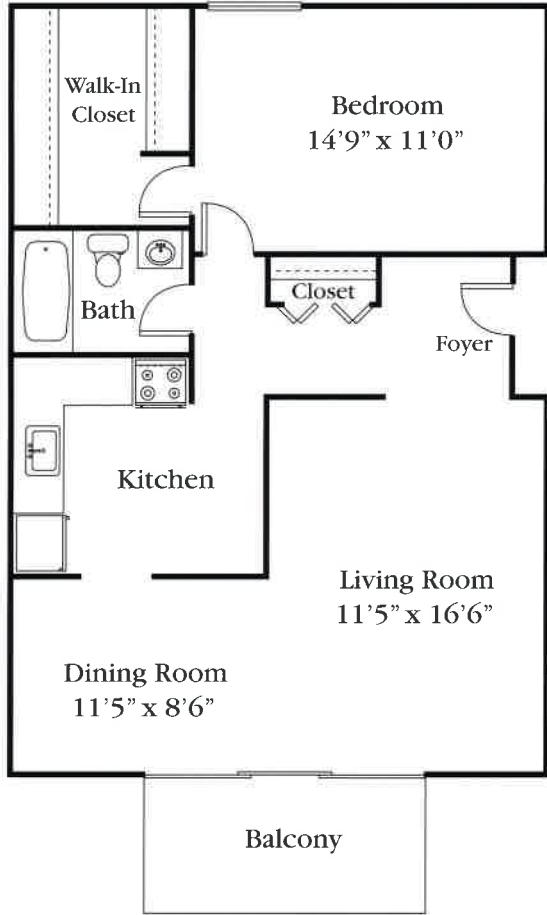


An Ideal Community

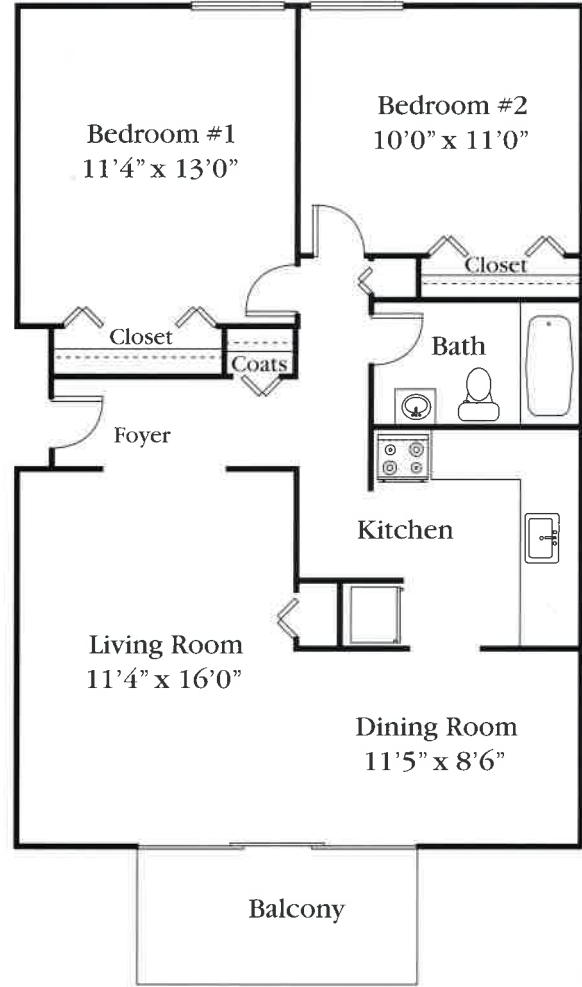
- Beautifully landscaped courtyard
- Ample guest parking
- 24-hour emergency maintenance

Dimensions are

1 Bedroom 750 Square feet



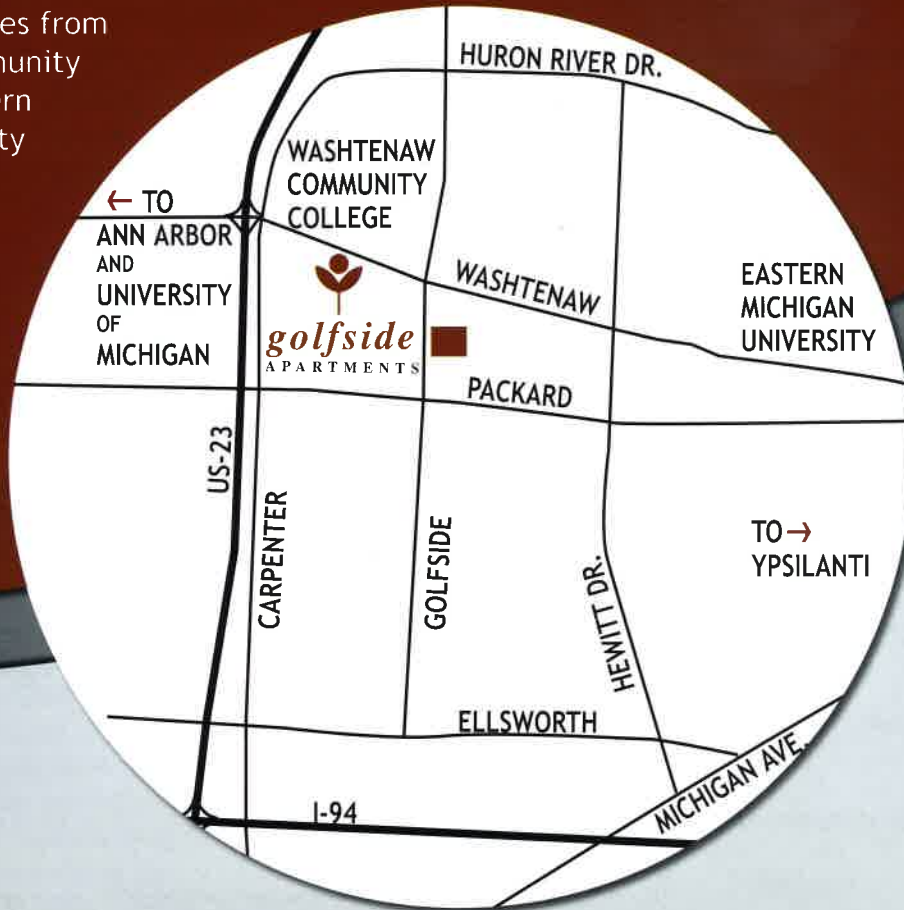
2 Bedroom 950 Square feet



approximate

An Ideal Location

- Walk to dining, shopping and entertainment
- One-half block from AATA bus line
- Less than two miles from Washtenaw Community College and Eastern Michigan University
- Four miles from Cleary College, Concordia University and University of Michigan
- Minutes from US-23 and I-94



Golfside Apartments
1099 Maiden Lane
Ann Arbor, MI 48105
(734) 665-4331 Fax (734) 665-2354
visit us at: www.golfsideapts.com



Professionally
Managed By:

